

ACECOURT MICRO

29/08/2011

DESCRIPTION

AceCourt is an infill granulate for tennis courts. It consists of ceramic coated quartz granules. The quality, shape and size of the base granules was specifically chosen to obtain, in conjunction with artificial turf, the following benefits:

- No dust in dry weather
- Due to round shape less / no skin damage
- Good ball bounce
- Sufficient firm for quick acceleration

The ceramic coating consists of high quality binders and color pigments. This creates a granulate with ultimate properties:

- UV-resistance (no yellowing, no chalking or demolition of polymers)
- Water resistance
- Chemical resistance (herbicide, acid rain, salt)
- Wear resistance (colour consistency)
 (EN15306 test by ISA Sports Int.: "No visual change after 10,000 cycles)

PROPERTIES

Color	Red/Green
Size	0.1-0.3 mm
Real density at 20°C	2,65 gr/cm ³
Bulk density at 20°C	+/- 1,5 kg/l
Hardness	7 mohs

PACKAGING

Bags: 25 kg

Big bags:1000 kg

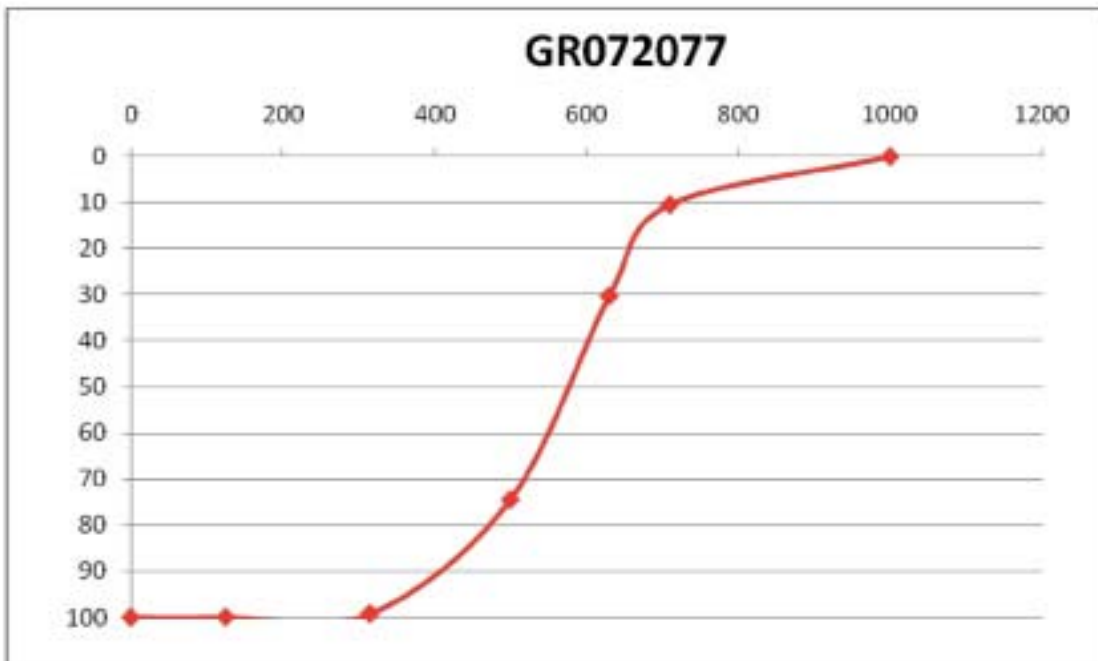
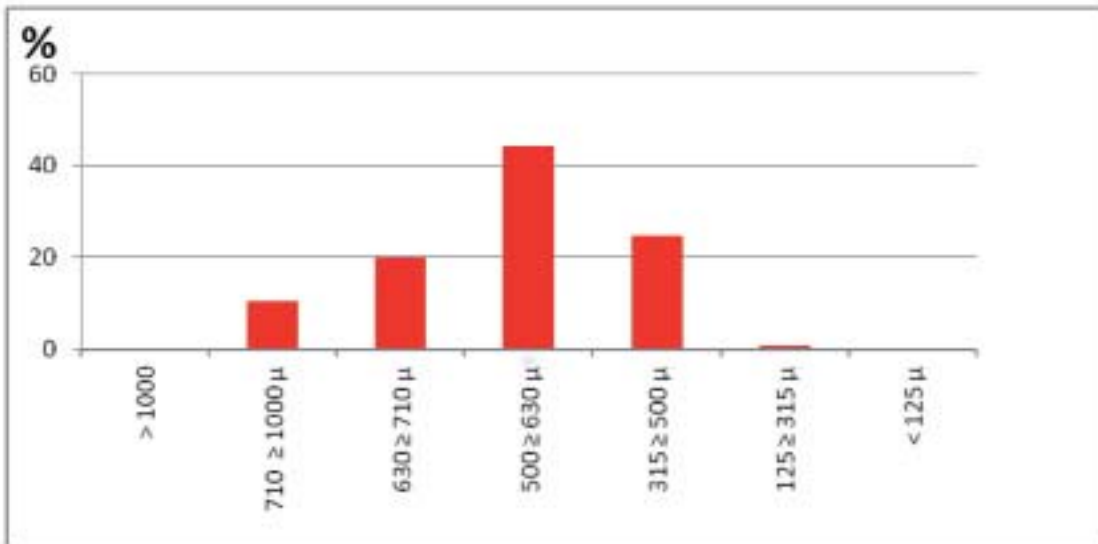
Big bags:1500 kg



ACECOURT

29/08/2011

PARTICLE SIZE DISTRIBUTION



SAFETY

Read always the material safety datasheet of the product.

